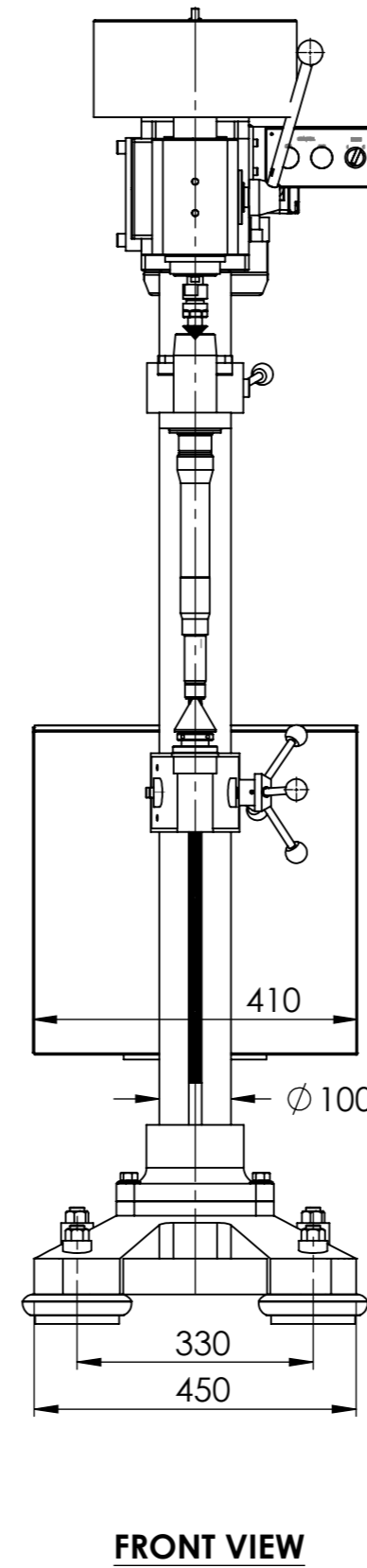
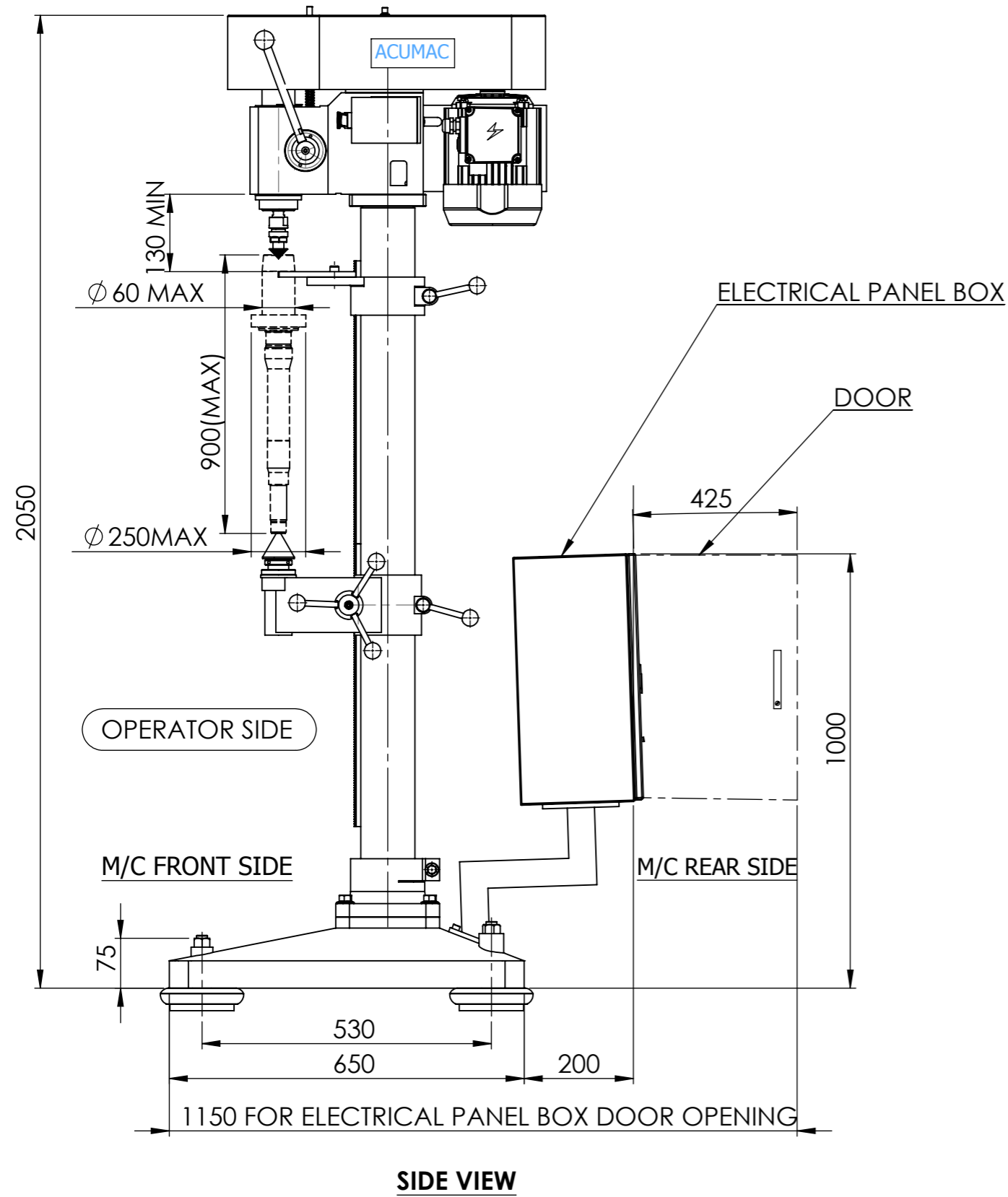


ACUMAC CENTRE CLEANING MACHINE-CL-200



TECHNICAL SPECIFICATION:-

MAX. DIA HELD IN V STEADY	60 MM
MAX WORKPIECE DIA	100 MM
MAX. WORKPIECE LENGTH	900 MM
MAX. DIA OF LAPPING WHEEL (WITH WHEEL ADAPTOR)	60 MM
SPINDLE SPEEDS	1500 ~ 1400 RPM MAX
SPINDLE MOTOR- NGEF MAKE	1.0/1.4 KW 1500~3000 RPM (DUAL SPEED)
DIA. OF GRINDING WHEEL SHANK	6 MM
MAX.CHUCKING DIA OF COLLET	10 MM
SPINDLE TRANVERSE	25 MM
DRESSING DIAMOND TRANVERSE	35 MM
NET WEIGHT	300 KGS (APPROX)